

poptech
point of purchase technology

CD/DVD P.O.P. DISPLAYS

12 CD Counter Top Display Holds a maximum of 12 CDs or 8 DVDs

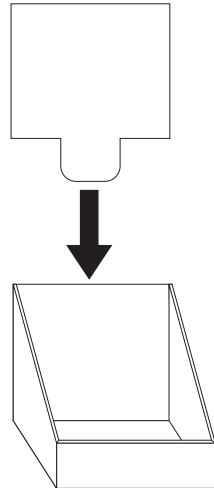
Height: 9 3/4" (including header card)

Width: 6 1/8"

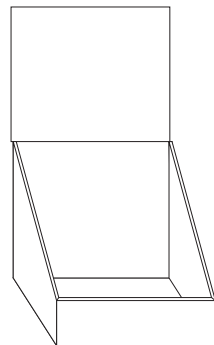
Depth: 5 1/2"

Blank header card is included with this display.

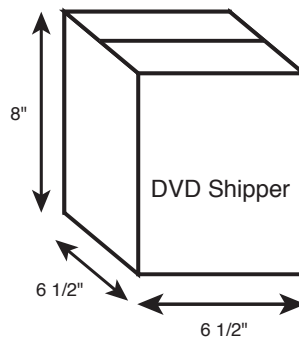
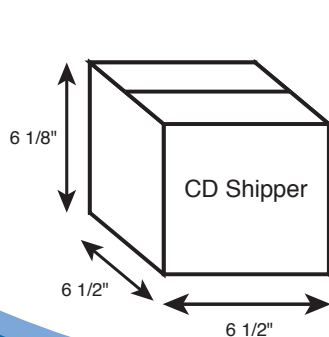
Printed header cards are available.



1. Slide header card attachment down into slot on back of tray.



2. Assembly complete.



24 CD Counter Top Display Holds a maximum of 24 CDs or 16 DVDs

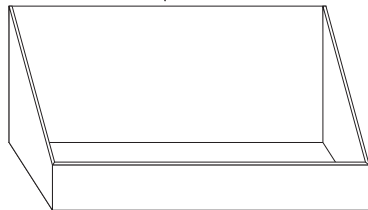
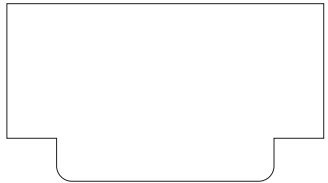
Height: 9 3/4" (including header card)

Width: 11 5/8"

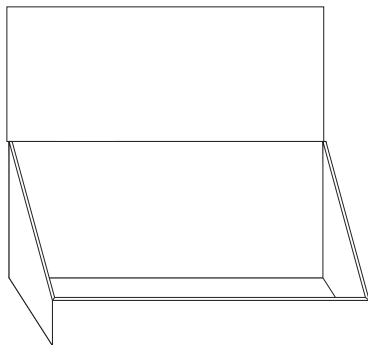
Depth: 5 1/2"

Blank header card is included with this display.

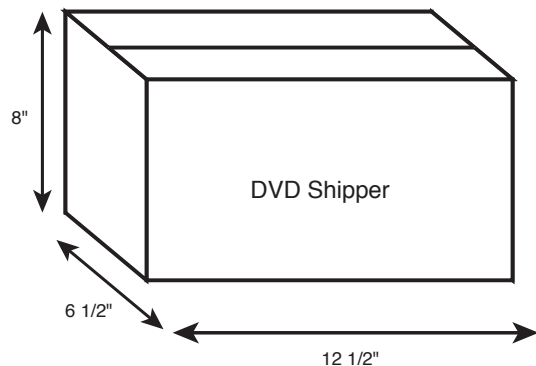
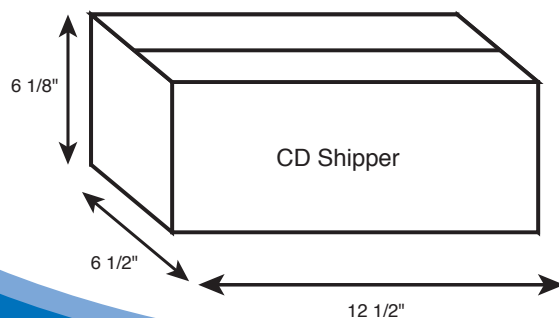
Printed header cards are available.



1. Slide header card attachment down into slot on back of tray.



2. Assembly complete.



3 Step Counter Top Display Holds a maximum of 24 CDs or 18 DVDs

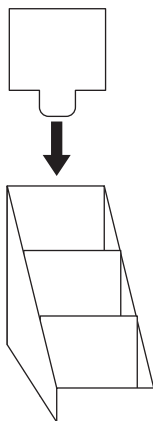
Height: 9 3/4" (including header card)

Width: 6 1/8"

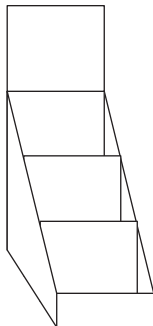
Depth: 5 1/2"

Blank header card is included with this display.

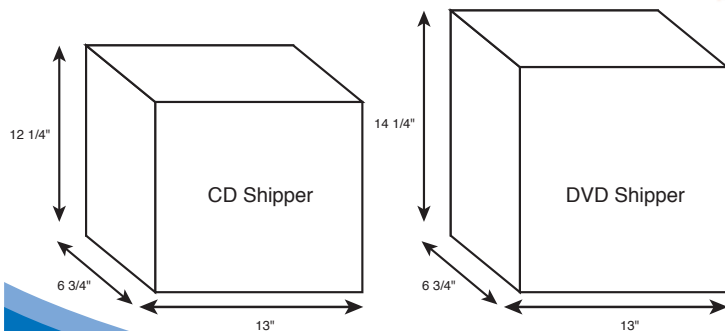
Printed header cards are available.



1. Slide header card attachment down into slot on back of tray.



2. Assembly complete.



64" Pop-Up Merchandiser Display With 2 Trays Holds a maximum of 96 CDs or 72 DVDs Assembles in 12 seconds!

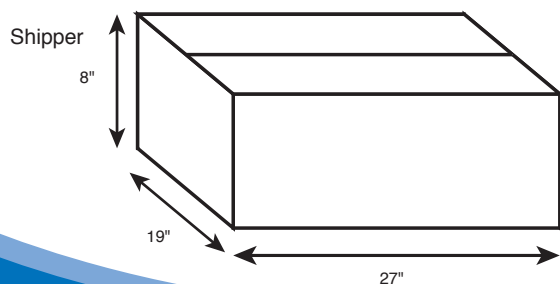
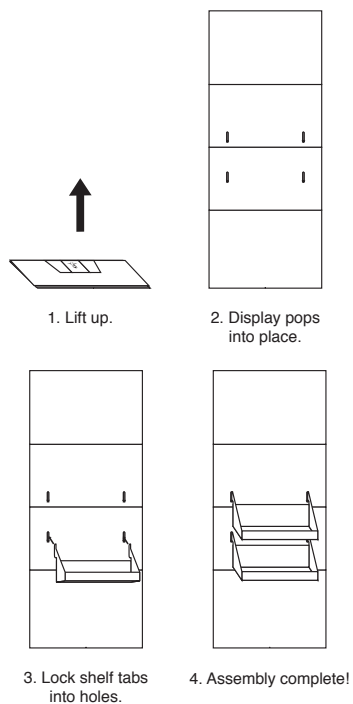
Height: 64"
Width: 26"
Depth: 11"

Maximum product per display using small trays: 48 DVDs.
Maximum product per display using large trays: 72 DVDs.
Trays are 17 3/4" wide, and your choice of either 7" or 5" deep.



Media (Qty's per single tray)	DVD	CD
Small Tray No Filler	24 pcs.	33 pcs.
Small Tray Filler	18 pcs.	24 pcs.
Large Tray No Filler	36 pcs.	48 pcs.
Large Tray Filler	24 pcs.	33 pcs.

Note: Tray filler is built into unit and is not a separate piece.



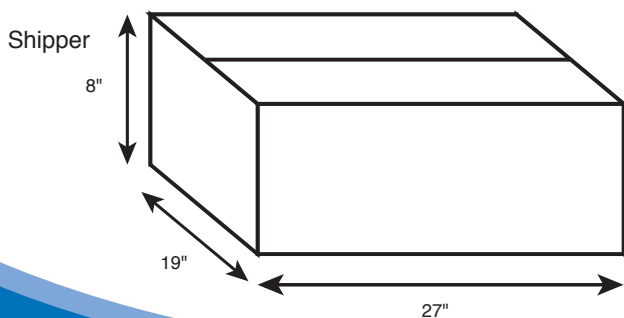
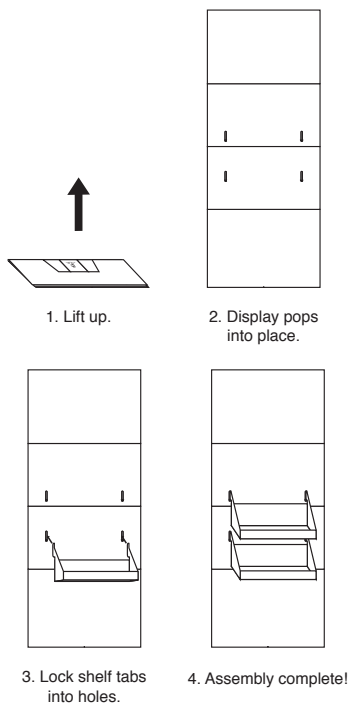
54" Pop-Up Merchandiser Display With 2 Trays Holds a maximum 48 CDs or 32 DVDs Assembles in 12 seconds!



Height: 54"
Width: 26"
Depth: 11"

Maximum product per display: 24 CDs or 16 DVDs.
Trays are 11 1/2" wide, and 5" deep.

Media (Qty's per single tray)	DVD	CD
11 1/2" Wide Tray	16 pcs.	24 pcs.



Die Cut Character Merchandiser Holds a maximum of 48 CDs or 32 DVDs Assembles in 15 seconds

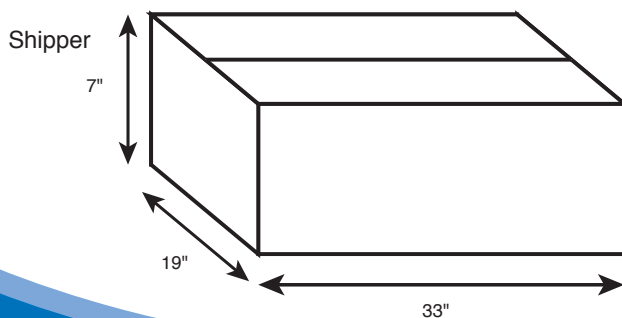
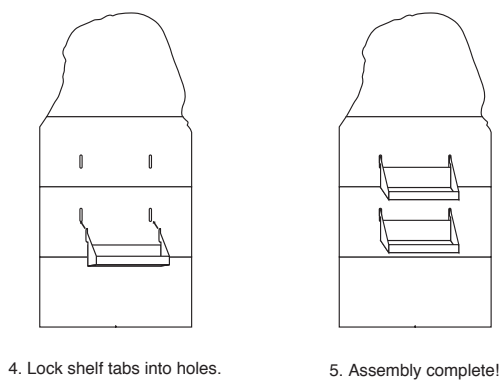
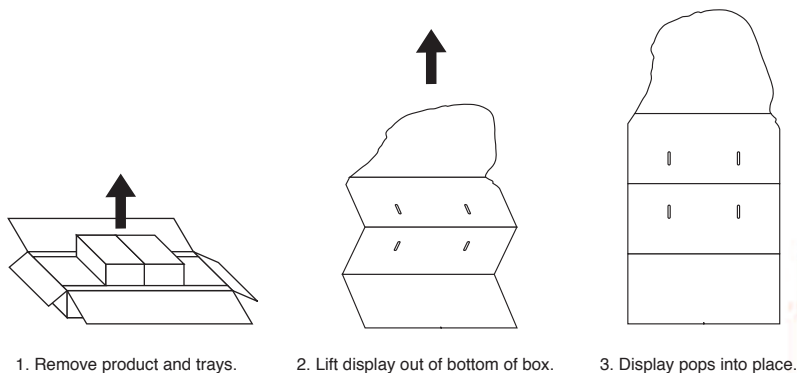
Height: 54"

Width: 26"

Depth: 11"



Quantity per single tray	DVD	CD
Existing Tray	16 pcs.	24 pcs.



Pocket Tiltback

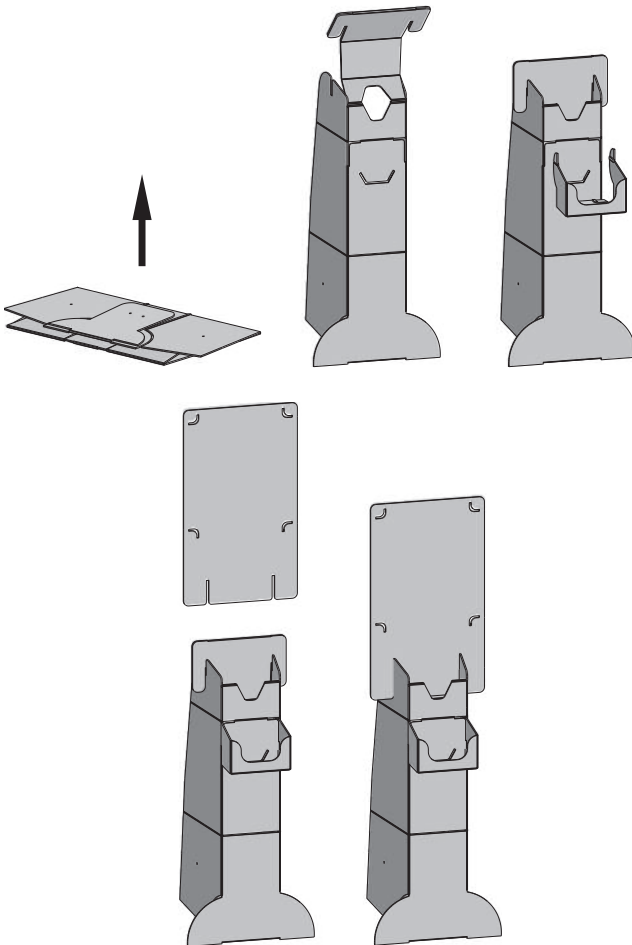
Each pocket holds up to 6 DVDs or 8 CDs

Height: 41"

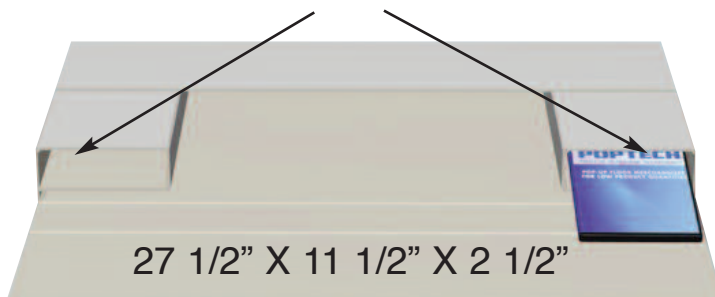
Width: 14"

Depth: 10 1/2"

Assembles in 45 seconds



Product Pockets



48" Pop-Up Tiltback
Capable of holding 4 trays
3 tray styles to choose from
Shipper size varies with tray selection
Assembles in 45 seconds

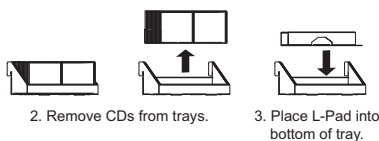


Quantity per tray	DVD	CD
Single facing tray	8 pcs.	12 pcs.
Single facing tray with L pad	4 pcs.	6 pcs.
Double facing tray	16 pcs.	24 pcs.
Double facing tray with L pad	8 pcs.	12 pcs.
Triple facing tray	24 pcs.	36 pcs.
Triple facing tray with L pad	12 pcs.	18 pcs.

**L pad may be used as a filler or as a step.
When used as a step, another facing is gained
and quantity per tray is not reduced**

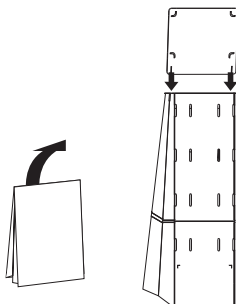


1. Assemble L pads if required.



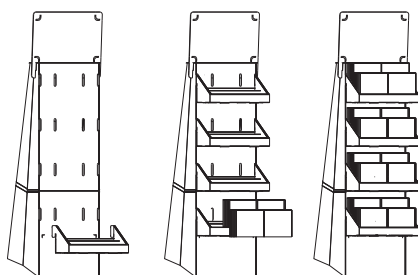
2. Remove CDs from trays.

3. Place L-Pad into bottom of tray.



4. Unfold base.

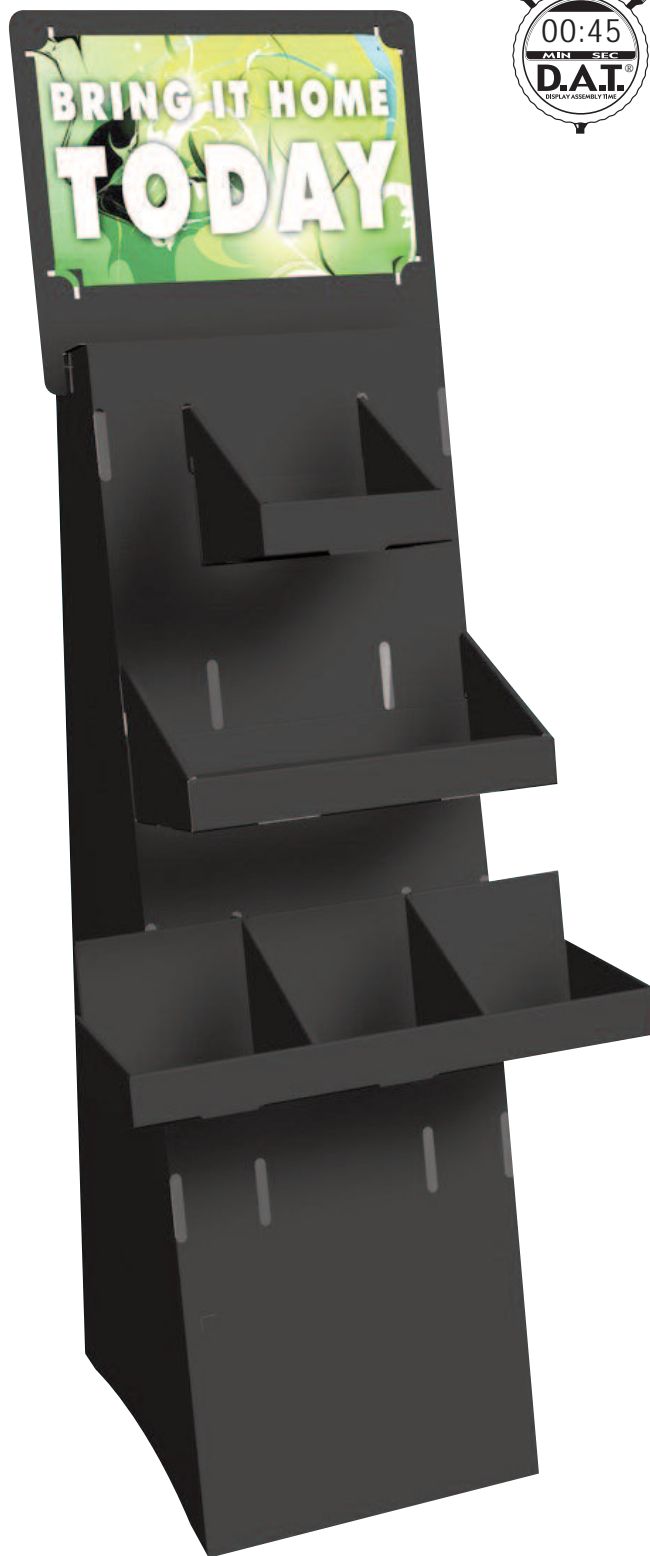
5. Attach header card to base.



6. Hook trays onto base.

7. Place CDs back into tray.

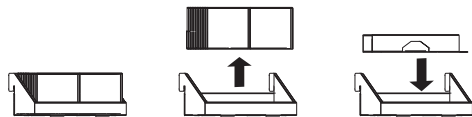
8. Assembly complete.



Two Sided Tiltback
Holds a maximum of 288 CDs or 192 DVDs
Height: 48"
Width: 12"
Depth: 16 3/4"
Assembles in 1 minute 30 seconds

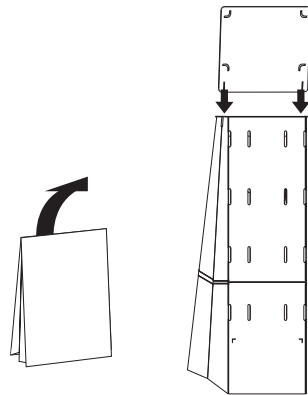


1. Assemble L pads if required.



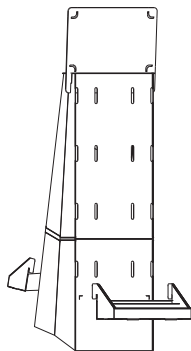
2. Remove CDs from trays.

3. Place L-Pad into bottom of tray.

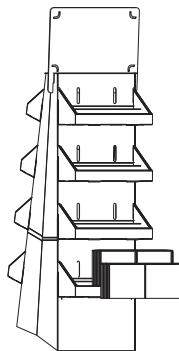


4. Unfold base.

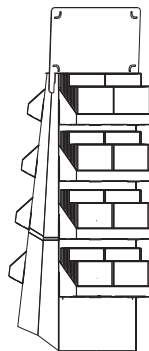
5. Attach header card to base.



6. Hook trays onto base.



7. Place CDs back into tray.



8. Assembly complete.



Generic Pop-Up Tiltback Holds a maximum of 96 CDs or 64 DVDs Assembles in 25 seconds

Height: 44 1/2" (56 1/2" including header card)

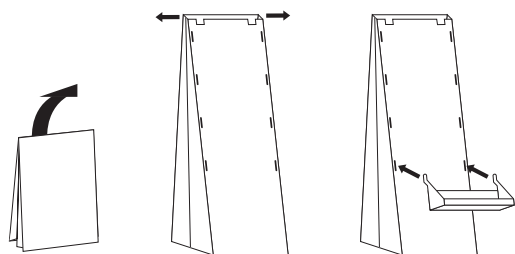
Width: 12"

Depth: 14 1/2"

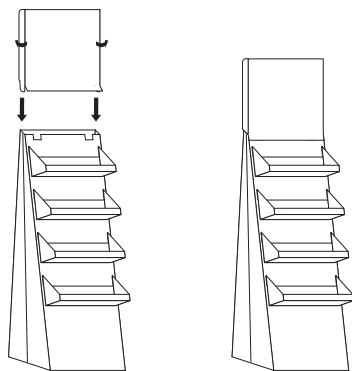
Note: The image to the right is shown with a 10pt. card stock header card insert. Fully printed header cards are available.

Trays are 11 1/2" wide, 5" deep.

Quantity per single tray	DVD	CD
Existing Tray	16 pcs.	24 pcs.

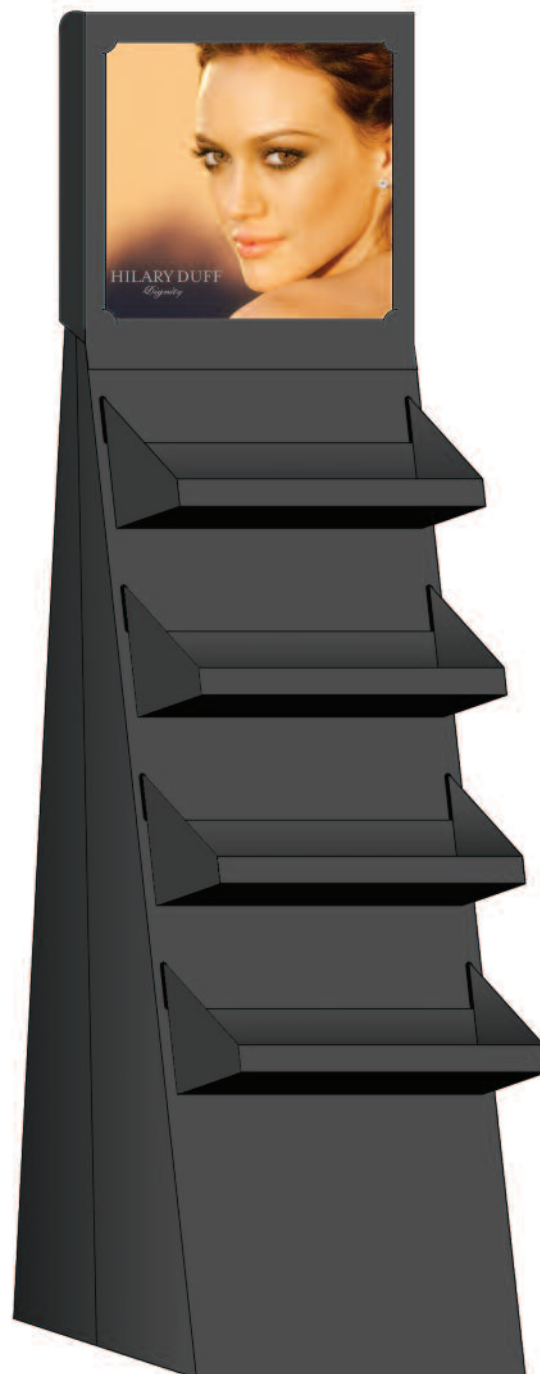
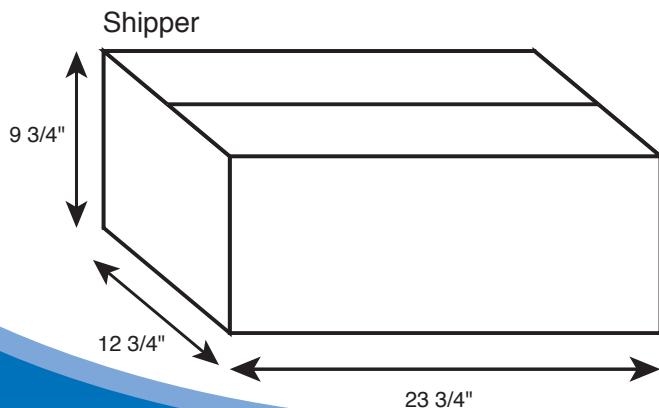


1. Unfold base. 2. Base pops into place. 3. Starting at the bottom, hook trays into display.



4. Attach header card to base by folding back sides and sliding them inside base. Front portion of header should be on outside of base.

5. Assembly complete!



Header card with full litho wrap also available.

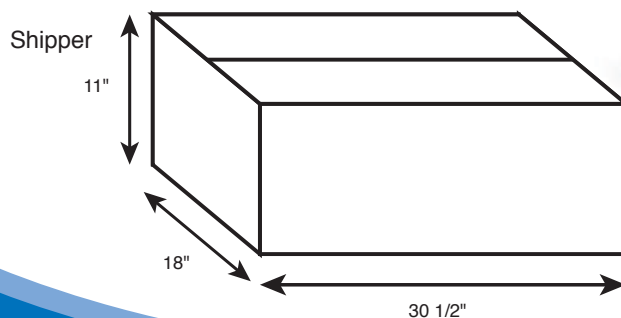
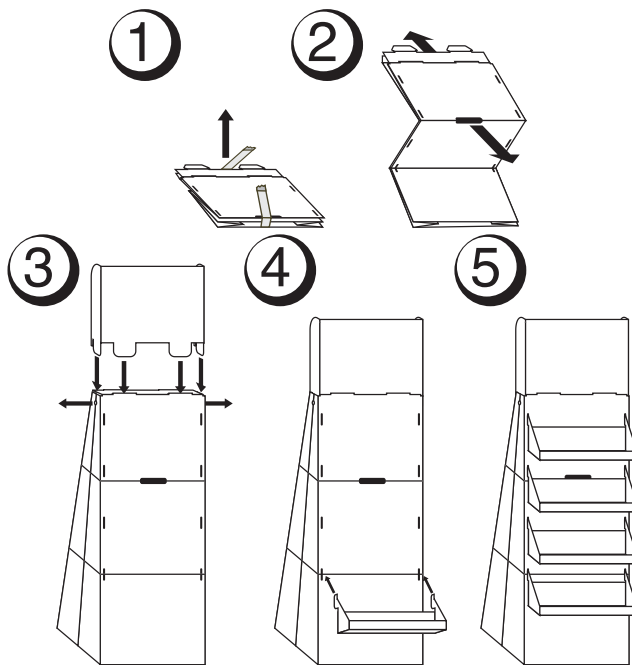
Generic Pop-Up A Frame Holds a maximum of 144 CDs or 96 DVDs Assembles in 25 seconds

Height: 47" (61" including header card)
Width: 19"
Depth: 17"

Trays are 17 3/4" wide, and your choice of either 7" or 5" deep.

Quantity per single tray	DVD	CD
Small Tray No Filler	24 pcs.	33 pcs.
Small Tray Filler	18 pcs.	24 pcs.
Large Tray No Filler	36 pcs.	48 pcs.
Large Tray Filler	24 pcs.	33 pcs.

Note: Tray filler is built into unit and is not a separate piece.



A Frame Display
1 Color Flexo Base
4 Color Litho Header



Generic Pop-Up Quarter Pallet

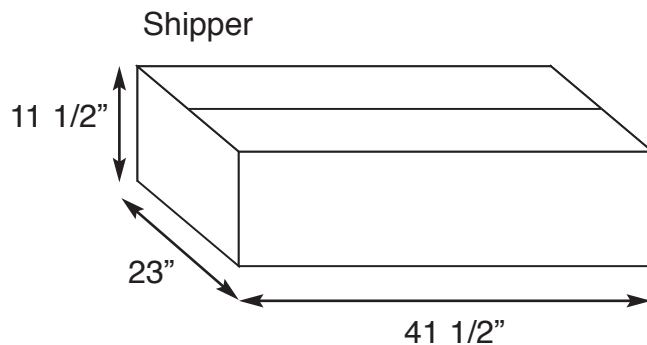
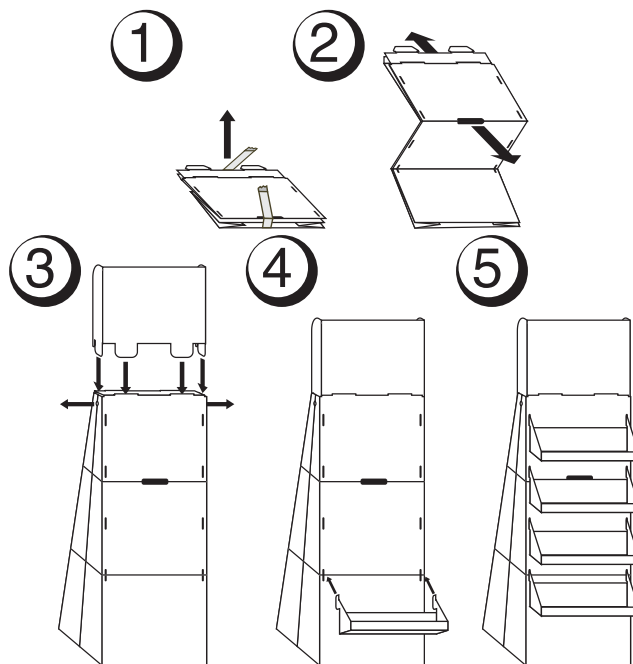
Each tray has 6 facings with 10 CDs per facing

Total of 60 CDs per tray and 240 CDs per display

Each tray holds 3 facings of DVDs with 14 DVDs per facing

Total of 56 DVDs per tray and 224 DVDs per display

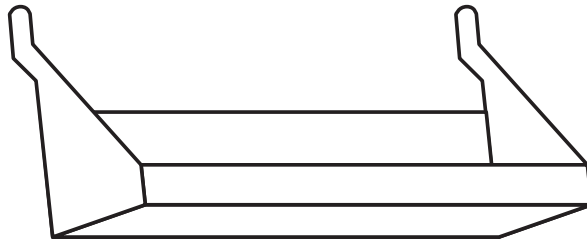
If you are using a mixed shelf of DVDs and CDs, only the front step can be used for DVDs which will hold 7 DVDs



Existing Hook-In Trays

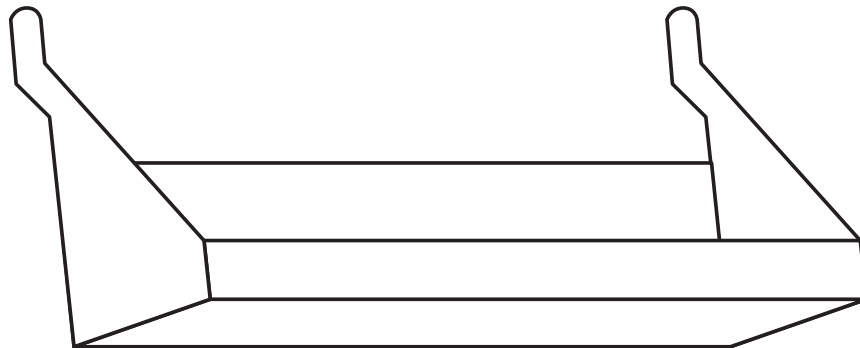
Tiltback tray

This tray holds 2 facings of CDs or DVDs
Each tray holds a maximum of 24 CDs or 16 DVDs



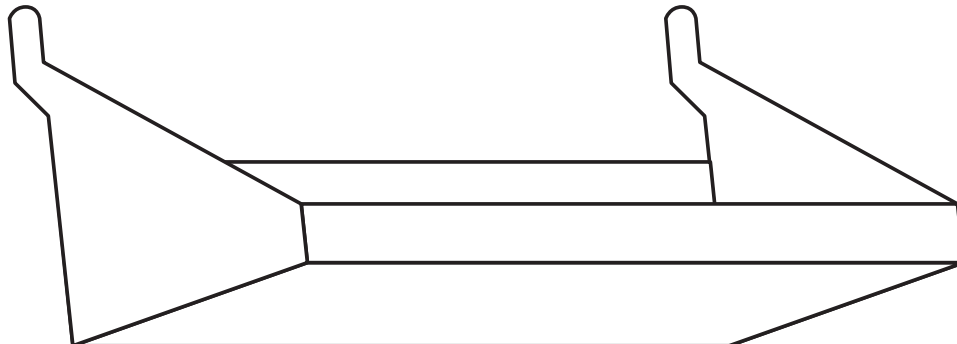
Generic Small Tray

This tray holds 3 facings of CDs or DVDs
Each tray holds a maximum of 33 CDs or 24 DVDs



Generic Large Tray

This tray holds 3 facings of CDs or DVDs
Each tray holds a maximum of 48 CDs or 36 DVDs



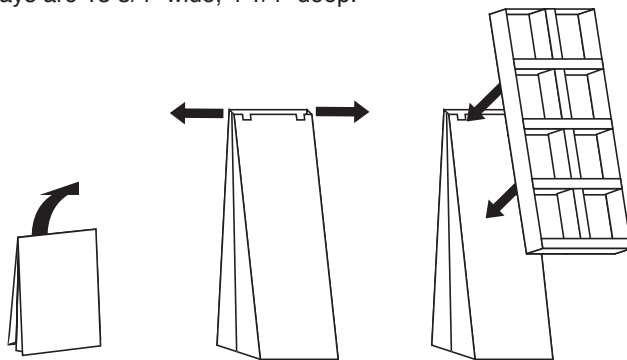
Pop-Up Tiltback With Sidewinder Holds a maximum of 108 CDs or 56 DVDs Assembles in 15 seconds

Height: 53" (65" including header card)

Width: 15"

Depth: 14 1/2"

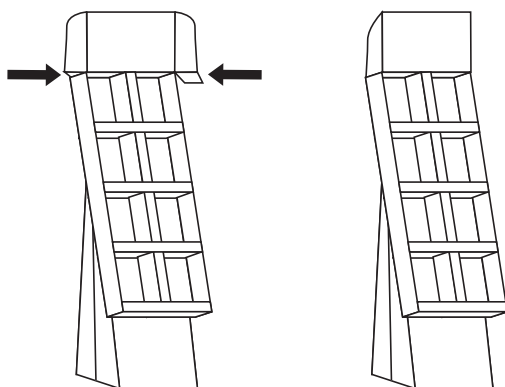
Trays are 13 3/4" wide, 4 1/4" deep.



1. Unfold base.

2. Pull sides of base outwards.
Base pops into place.

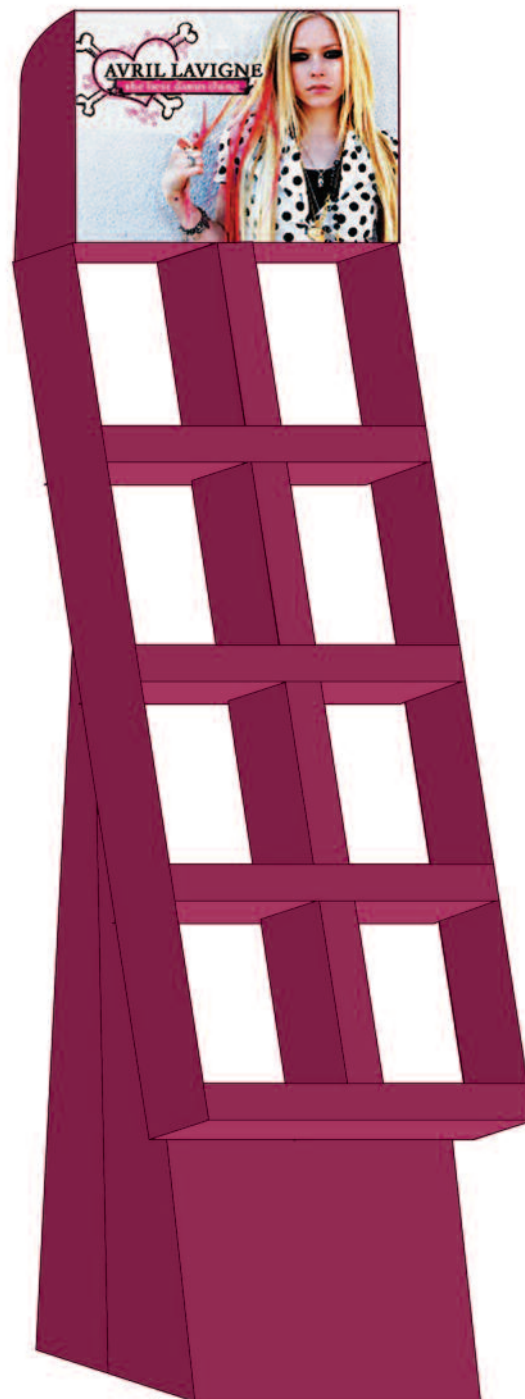
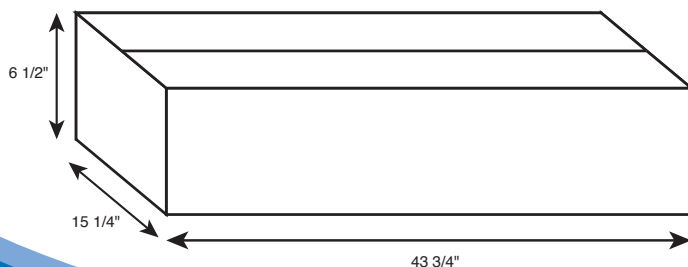
3. Attach tray to base
using pre-attached
plastic clips.



4. Attach header card to
tray by sliding tabs on
bottom of header into slots
on top of tray.

5. Assembly complete!

Shipper

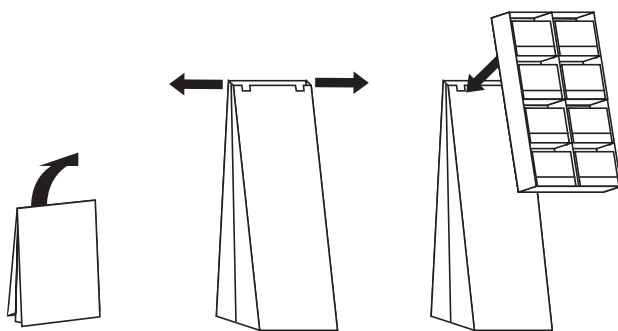


Pop-Up Tiltback With 8 Pocket Tray Holds a maximum of 72 CDs Assembles in 15 seconds

Height: 47 1/4" (56 1/4" including header card)

Width: 15"

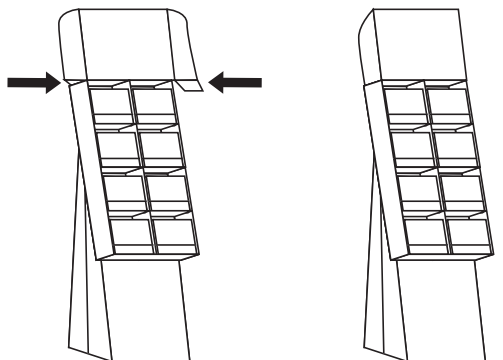
Depth: 14 1/2"



1. Unfold base.

2. Pull sides of base outwards.
Base pops into place.

3. Attach tray to base
using pre-attached
plastic clips.

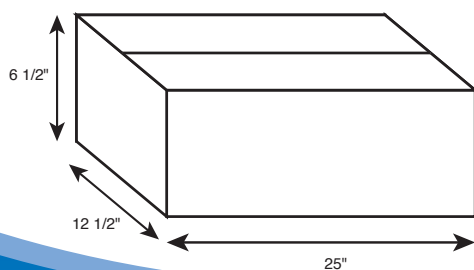


4. Attach header card to
tray by sliding tabs on
bottom of header into slots
on top of tray.

5. Assembly complete!



Shipper



Pop-Up Base And Tray Holds a maximum of 78 CDs or 48 DVDs (as illustrated) Assembles in 10 seconds

Height: 48 1/2"

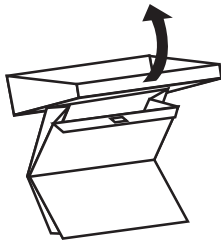
Width: 18 1/2"

Depth: 13 3/4"

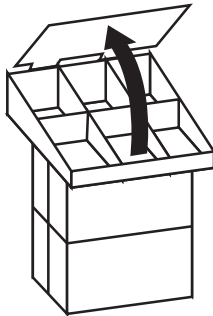
Actual area touching floor is 15" wide, 12" deep



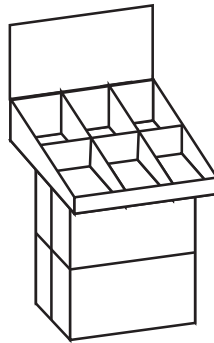
Quantity per single tray	DVD	CD
Existing Tray	48 pcs.	78 pcs.



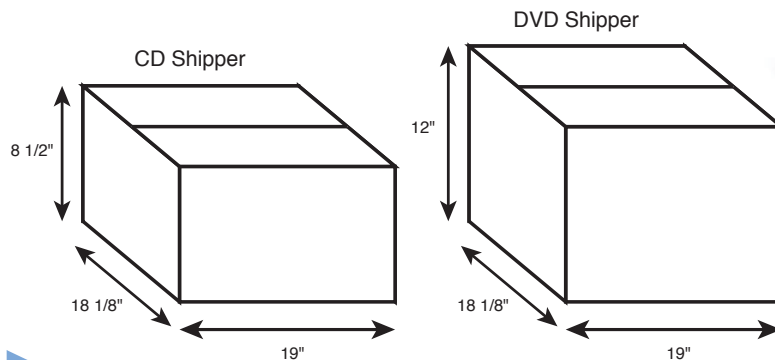
1. Lift display out of box while tilting tray back.



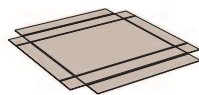
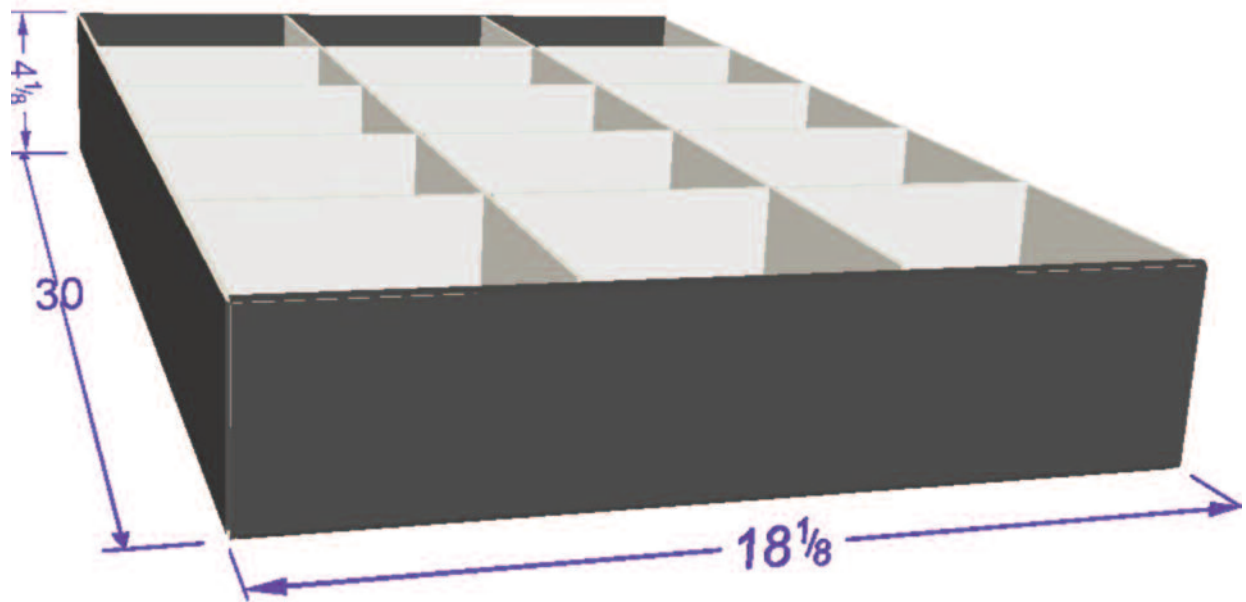
2. Lift header up then push down into place.



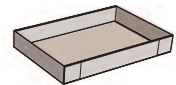
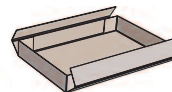
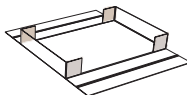
3. Assembly complete!



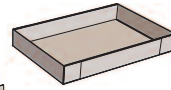
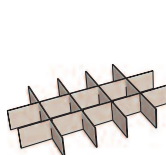
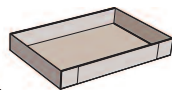
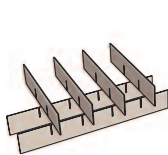
Countertop CD/DVD Tray
Holds a maximum of 225 CDs or 150 DVDs
Ships flat and assembles easily in store



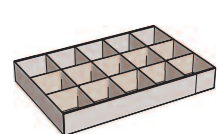
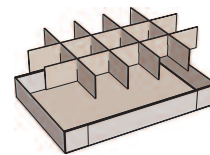
1. Fold up side flaps and fold small flanges towards inside of tray.



2. Fold long flaps overtop small flanges and lock into place.

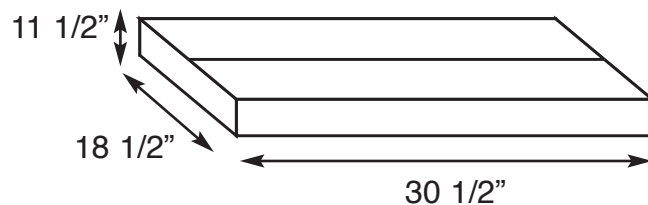


3. Slide small dividers down through slots on long dividers.

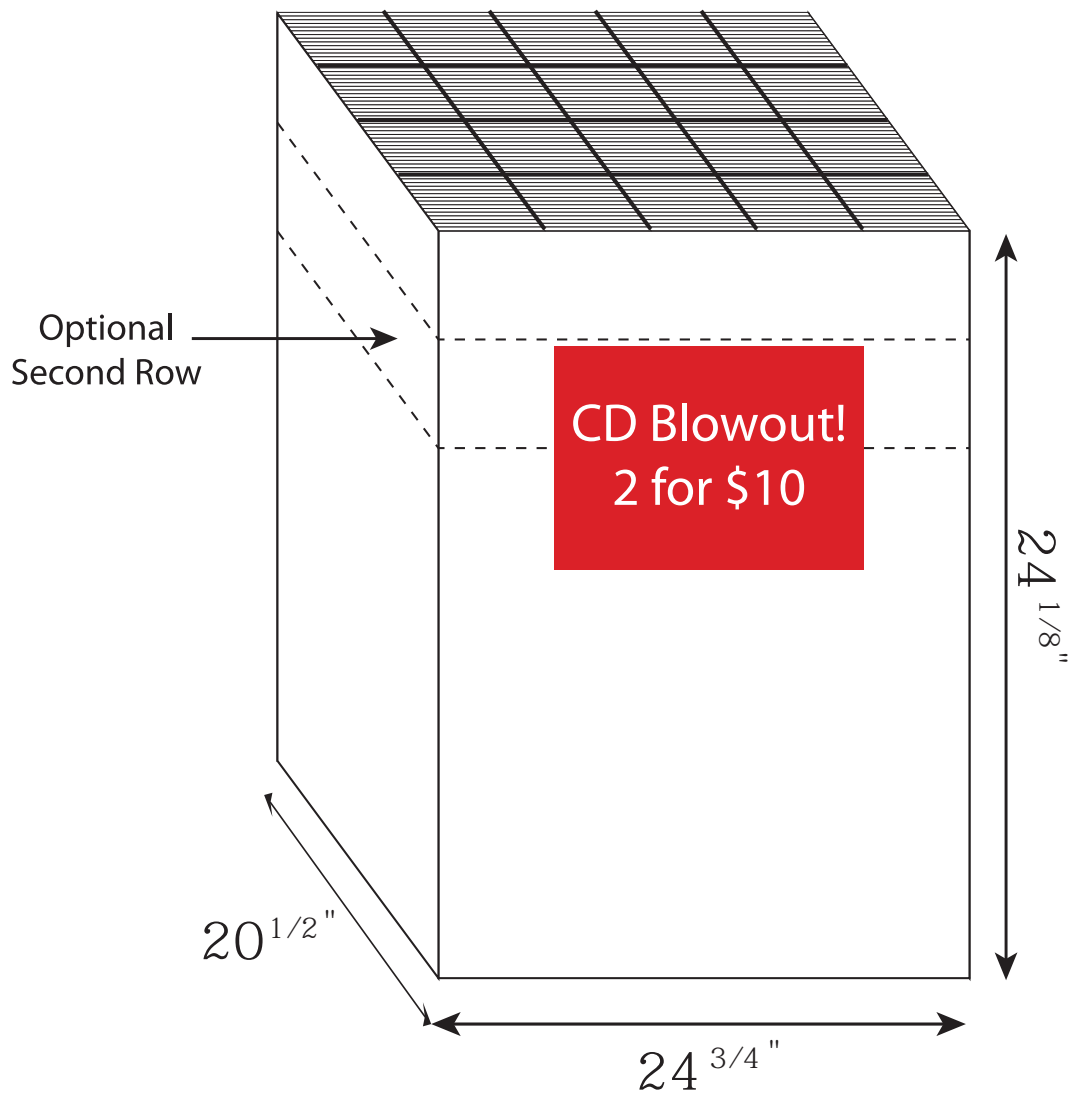


4. Place dividers inside tray. Assembly complete.

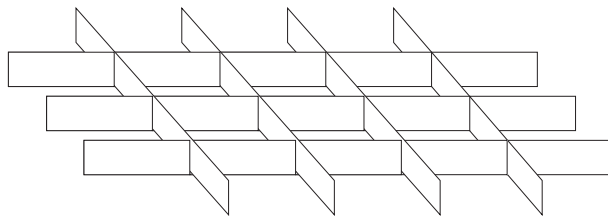
Shipper



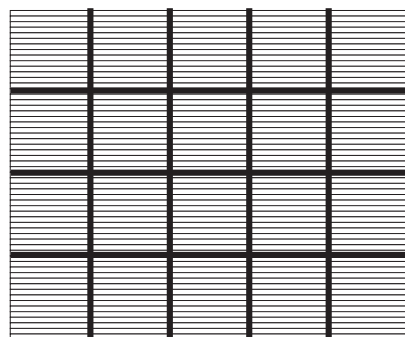
CD Dump Bin
Holds a maximum of 600 CDs
Various sizes available



Inside Dimension: 23" X 19"
5 rows across, 60 CDs deep
Total: 300 CDs



Optional CD Divider



CD Pole Tray
Holds 12 CDs
Attaches to pole near cash register

Height: 5"
Width: 6"
Depth: 5 7/8"

Features 2 dividers to keep CDs from tipping forward.
Clear plastic front panel to fully reveal album artwork.
Includes 2 locking plastic ties to secure tray to pole.

