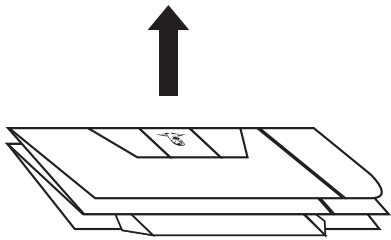


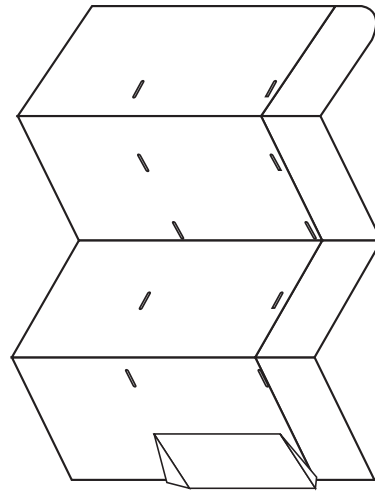


[www.poptech.ca](http://www.poptech.ca)

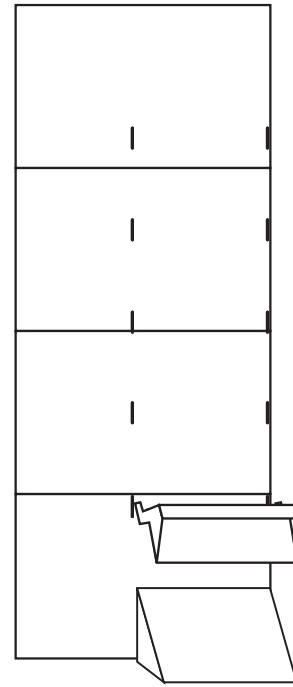
## K-SWISS DISPLAY ASSEMBLY



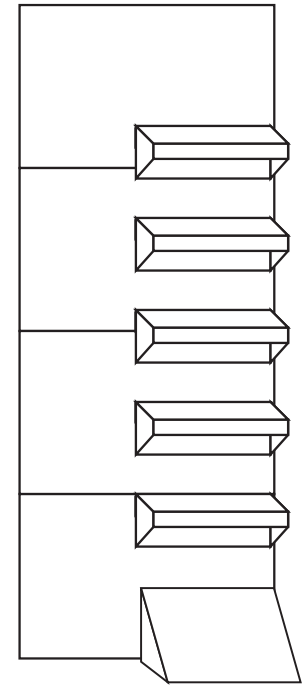
1. Lift up.



2. Display pops into place.



3. Starting from the bottom, hook trays into slots.



4. Assembly complete.

### IMPORTANT: PLEASE NOTE

**Load display from bottom to top.**

**Do NOT drag or move display across the floor when loaded with product.**

**In the event that these instructions are not properly followed, Poptech will not be held responsible for any problems associated with the display.**